

DOLAM

PRZEDSIĘBIORSTWO PRODUKCYJNE
 PODZESPOŁÓW ELEKTRONICZNYCH
DOLAM S.A.

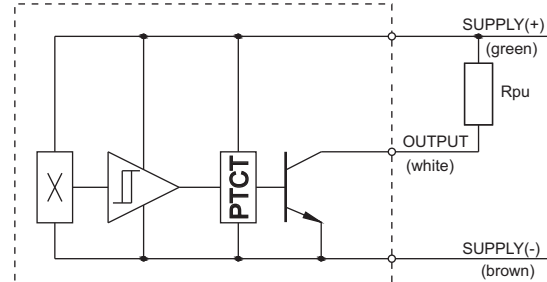
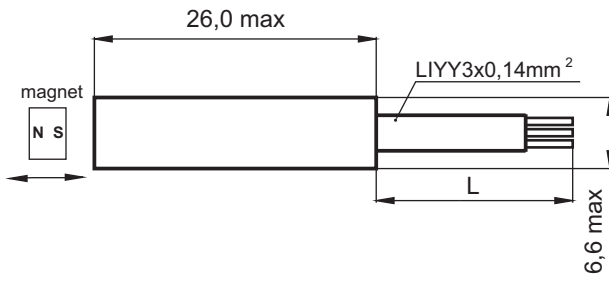
50-425 Wrocław, ul. Krakowska 64, Poland
 tel. (+48) 71/342-65-54, fax (+48) 71/342-58-59
 e-mail: sales@dolam.pl
 www.dolam.pl

Hall sensor UHS01/5-24

RoHS compliant product

Sensors are operated by permanent magnets, sizes and parameters of which depend on user's applications.

In case doubts please contact the producer



L – Length of wires depends on customer's requirement

all dimensions in mm

DATA SCAN		Unit	UHS01/5-24
Contact form			open collector (NPN)
Function			unipolar switch
Operating voltage range	min	V _{DC}	4,5
	max		24
Max current consumption	max	mA	6
Output saturation voltage	max	mV	500
Output leakage current	max	A	10
Output current	max	mA	25
Operating frequency	max	kHz	100
Operate point (B _{OP})	max	mT	6,0 (south)
Release point (B _{RP})	min	mT	0,5 (south)
Hysteresis (B _{hys} = B _{OP} - B _{RP})	typ	mT	1,0
Environment category acc. to IEC 68-2-1÷3			40/85/21
Housing			Plastic case

* - sensor is protected against reverse polarity connection

** - output current is limited internally (30-60mA)

Typical applications:

Automatic control systems, garage doors, elevators, washing machines, refrigerators.



PRZEDSIĘBIORSTWO PRODUKCYJNE
 PODZESPOŁÓW ELEKTRONICZNYCH
DOLAM S.A.

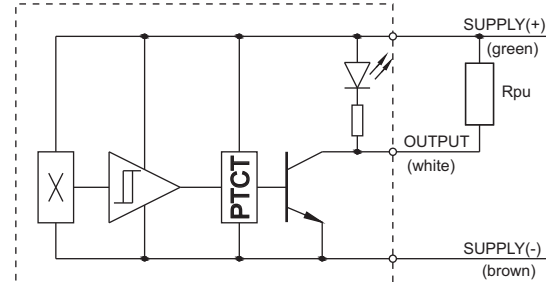
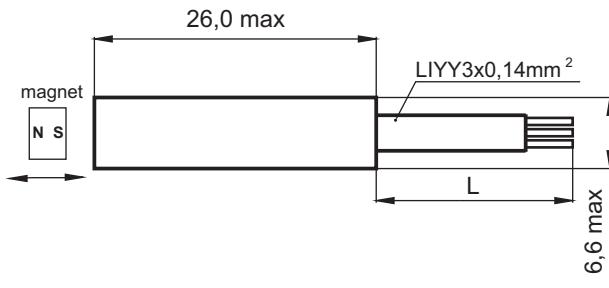
50-425 Wrocław, ul. Krakowska 64, Poland
 tel. (+48) 71/342-65-54, fax (+48) 71/342-58-59
 e-mail: sales@dolam.pl
 www.dolam.pl

Hall sensor UHS01

RoHS compliant product

Sensors are operated by permanent magnets, sizes and parameters of which depend on user's applications.

In case doubts please contact the producer.



L – Length of wires depends on customer's requirement

all dimensions in mm

DATA SCAN	Unit	UHS01/6	UHS01/12	UHS01/18
Contact form	open collector (NPN)			
Function	omnipolar switch (indicated by LED)			
Operating voltage range	min	4,5	9	15
	typ	6	12	18
	max	9	15	24
Max current consumption	$B < B_{RP}$	6		
	$B > B_{OP}$	12		
Output saturation voltage	max	500		
Output leakage current	max	10		
Output current	max	20		
Operating frequency	max	100		
Operate point (B_{OP})	max	6,0 (south)		
Release point (B_{RP})	min	0,5 (south)		
Hysteresis ($B_{hys} = B_{OP} - B_{RP}$)	typ	1,0		
Environment category acc. to IEC 68-2-1	3	40/85/21		
Housing	Plastic case			

* - sensor is protected against reverse polarity connection

** - output current is limited internally (30-60mA)

Typical applications:

Automatic control systems, garage doors, elevators, washing machines, refrigerators.

DOLAM

PRZEDSIĘBIORSTWO PRODUKCYJNE
 PODZESPOŁÓW ELEKTRONICZNYCH
DOLAM S.A.

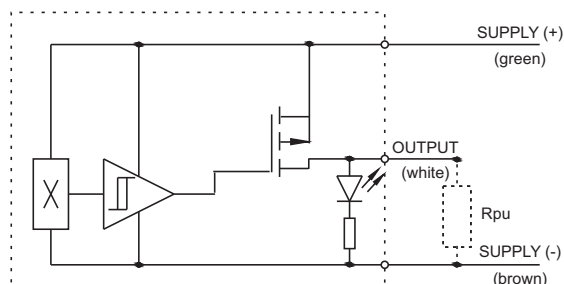
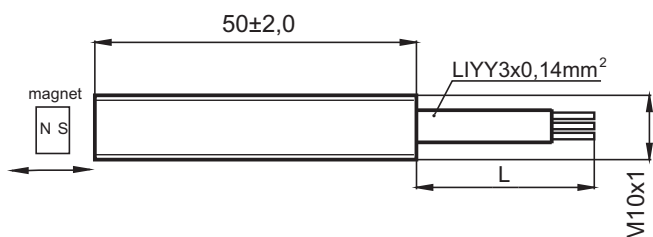
50-425 Wrocław, ul. Krakowska 64, Poland
 tel. (+48) 71/342-65-54, fax (+48) 71/342-58-59
 e-mail: sales@dolam.pl
 www.dolam.pl

Hall sensor UHS02

RoHS compliant product

Sensors are operated by permanent magnets, sizes and parameters of which depend on user's applications.

In case doubts please contact the producer



L – Length of wires depends on customer's requirement

all dimensions in mm

DATA SCAN	Unit	UHS02/6	UHS02/12	UHS02/18
Contact form		open drain (PNP)		
Function		unipolar switch (indicated by LED)		
Operating voltage range	min	4,5	9	15
	typ	6	12	18
	max	9	15	20
Max current consumption	$B < B_{RP}$	6		
	$B > B_{OP}$	20		
Output saturation voltage	max	600		
Output leakage current	max	10		
Output current	max	2		
Operating frequency	max	100		
Operate point (B_{OP})	max	6,0 (south)		
Release point (B_{RP})	min	0,5 (south)		
Hysteresis ($B_{hys} = B_{OP} - B_{RP}$)	typ	1,0		
Environment category acc. to IEC 68-2-1	3	40/85/21		
Housing		Plastic case		

Typical applications:

Automatic control systems, garage doors, elevators, washing machines, refrigerators.

DOLAM

PRZEDSIĘBIORSTWO PRODUKCYJNE
 PODZESPOŁÓW ELEKTRONICZNYCH
DOLAM S.A.

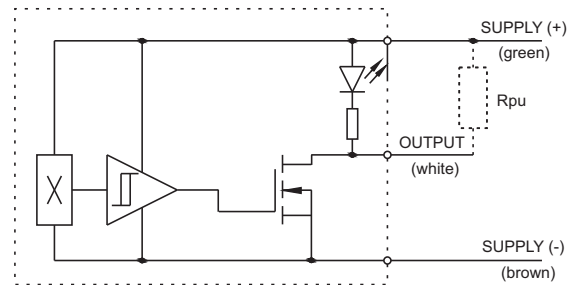
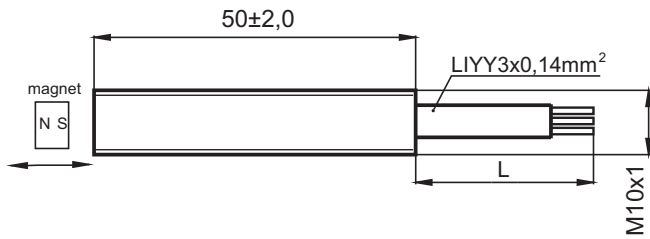
50-425 Wrocław, ul. Krakowska 64, Poland
 tel. (+48) 71/342-65-54, fax (+48) 71/342-58-59
 e-mail: sales@dolam.pl
 www.dolam.pl

Hall sensor UHS03

RoHS compliant product

Sensors are operated by permanent magnets, sizes and parameters of which depend on user's applications.

In case doubts please contact the producer



L – Length of wires depends on customer's requirement

all dimensions in mm

DATA SCAN	Unit	UHS03/6	UHS03/12	UHS03/18
Contact form	open drain (NPN)			
Function	unipolar switch (indicated by LED)			
Operating voltage range	min	4,5	9	15
	typ	6	12	18
	max	9	15	20
Max current consumption	$B < B_{RP}$	6		
	$B > B_{OP}$	20		
Output saturation voltage	max	600		
Output leakage current	max	10		
Output current	max	2		
Operating frequency	max	100		
Operate point (B_{OP})	max	6,0 (south)		
Release point (B_{RP})	min	0,5 (south)		
Hysteresis ($B_{hys} = B_{OP} - B_{RP}$)	typ	1,0		
Environment category acc. to IEC 68-2-1	3	40/85/21		
Housing	Plastic case			

Typical applications:

Automatic control systems, garage doors, elevators, washing machines, refrigerators.